

Atlanta Continuum of Care  
Meeting  
March 12, 2019

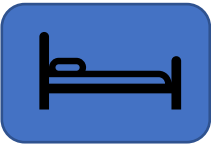


# OUR VISION FOR HOW ATLANTA ENDS HOMELESSNESS

People experiencing, or at-risk of, homelessness will first receive emergency assistance through:



**Outreach**



**Overnight Shelter**

Next, they will be



**Assessed**



**Assigned**



**Navigated**

Using a coordinated and standard process to one of four interventions that will end their homelessness.



**Diversion**



**Income &  
Employment**



**Rapid  
Rehousing**

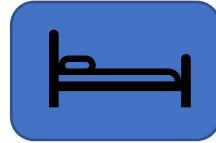


**Permanent  
Supportive  
Housing**

## System Vision



Outreach



Overnight Shelter

## System Components

Outreach Teams

Shelters

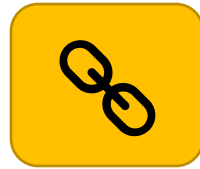
## System Roles

Outreach Assessors  
& Navigators

Shelter Operators



Assessed



Assigned



Navigated

Coordinated Entry  
System

Assessors

Navigators



Diversion



Income &  
Employment



Rapid  
Rehousing



Permanent  
Supportive  
Housing

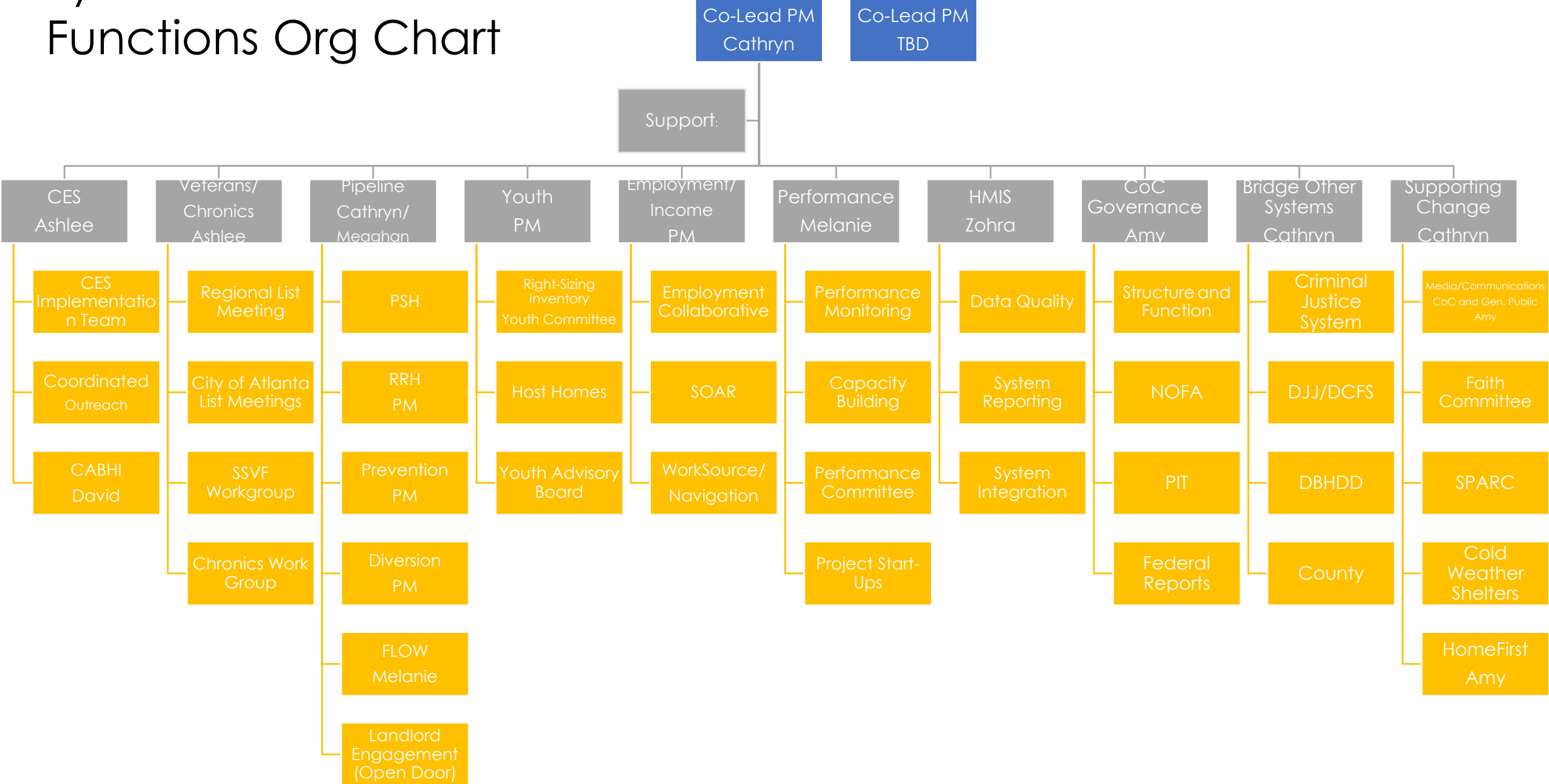
Income Services

Housing Providers

Diversion  
Specialists

Income &  
Housing Case  
Managers

# System Transformation Functions Org Chart



Strengthen  
Crisis  
Response  
Emergency  
shelter

- Donna center: 35 beds, women/families \$600,000 (\$200K capital, \$400K operating)
- Evolution center: 100 beds, men Year 1: \$3.3 M; Year 2: \$1.3M
- Evaluating through data driven needs assessment

Strengthen  
Crisis  
Response:  
Outreach and  
income

- Intown Collaborative Ministries: 5 person outreach team at \$335K
- Atlanta Center for Self Sufficiency: Employment navigation at \$391K—embed employment assessment and navigation into CES

End Chronic  
Homelessness  
by 2019  
1000 PSH  
units

- 100 AH vouchers for shelter at Peachtree and Pine
- 50 vouchers through CoC award
- Open NOFA: 550 new units, \$22M+
- Fulton County partnership: services long term, \$3.5M

# End Family Homelessness by 2020

- PCCI and Chris180 rapid rehousing:
  - 240 families \$2.9M
- AVLF diversion/eviction defense pilot:
  - 160 families
  - \$240K



# End Youth Homelessness by 2020

- Inspiritus—Host homes: 30 youth, \$400K
- Project Community Connections—Youth RRH: 50 youth, \$400K