

**CoC Meeting
November 10, 2020**

Welcome: Cathryn Marchman, Chief Executive Officer



COVID RECOVERY: HOUSING SURGE 2020

Chronic Population

- Divide up City geography and assess all unassessed
- Start with key encampment locations
- Sheltered individuals

Near Chronic and Vulnerable

- Age
- Length of time on the Queue
- Risk factors/health conditions

Youth

All Youth sheltered and unsheltered

RFQ

Case Management, Housing Location and Rental Assistance

- Teams to review and score RFQ applications (complete)
- Contract awards (complete)
- Reissue RFQ as needed (complete)

Build Out and Policy

CE Policy, HMIS Build Out, Data tools

- CE prioritization policy (complete)
- HMIS build out (complete)
- Data tool for real time analysis and projections (complete)
- Hold Fee smartsheet build out (complete)

Define Roles/Planning

Outreach, System Navigation and Onboarding of Case Management, Hotel Phase 2

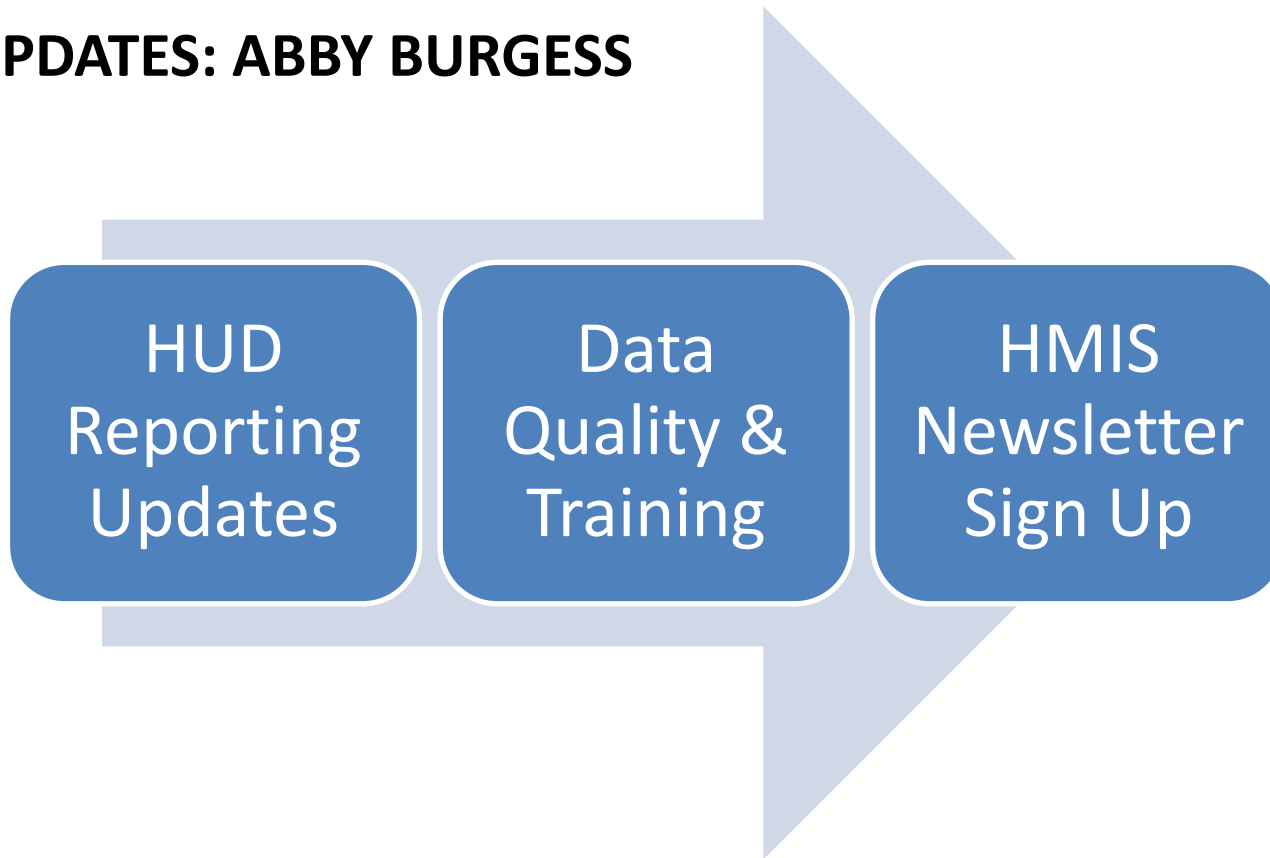
- Outreach teams begin housing surge assessment and navigation (in process)
- Hotel Phase 2 (in process)
- Review Data (ongoing)
- Define the role of system navigation (complete)



Encampment Closure, Housing, and Hotel Phase 2

- Outreach targeted encampment work
 - 183 new assessments
 - 134 updated CLS
 - 151 total chronic engagements
- Encampment prioritization for hotel
- Hotel re-opened for new enrollments 11/4
- Pryor St. encampments closing first
- 20 individuals from Pryor St. enrolled in hotel as of 11/9
- Upcoming encampment closures in coordination with the City
 - Wesley Dobbs by Atlanta Housing 11/19
 - Decatur/Kimble 12/3
 - I-85/SR-13 Viaduct (from Piedmont to Peachtree Creek) 12/10
 - Sydney Marcus/Buford Hwy/Cheshire Bridge (Lenox area) 12/17

HMIS UPDATES: ABBY BURGESS



Atlanta CoC: Year in Review

New Projects

COVID Response-Video

Ongoing services & revisiting the new normal

HUD McKinney Update

THE CATEGORIES

COORDINATED ENTRY SYSTEM SHELTER
ASSESSOR SUPERSTAR

HOUSING NAVIGATION WARRIOR (20

OUTREACH ASSESSOR SUPERSTAR

HELPDESK FREQUENT FLYER

TBRA PSH:
FASTEST ENROLLMENT TO MOVE-IN

DQ ROCK STARS

ANY OTHER NOMINATIONS?

HomeFirst PSH Pipeline Program Update
Chelsea Arkin



HomeFirst PSH Pipeline Program



- Notice of Funding Availability (NOFA): Permanent Supportive Housing Pipeline Program: <https://partnersforhome.org/pshpipeline/>
- Braided Funds: Capital (up to \$40k/unit), Operating (PBRA via AH), Supportive Services (Fulton)
- Relevant Links:
 - NOFA: <https://partnersforhome.org/wp-content/uploads/2018/10/NOFA-Atlanta-HomeFirst--final-10.25.18.pdf>
 - Application Form: <https://partnersforhome.org/wp-content/uploads/2019/04/HF-Atlanta-Application-Forms-update-4.22.19-1.xlsx>
 - Latest FAQ (including Atlanta Housing HomeFlex Information): <https://partnersforhome.org/wp-content/uploads/2019/04/HomeFirst-FAQ-Apr2019.pdf>

Contact Information

Chelsea Arkin

Director of Real Estate, Partners for HOME

carkin@partnersforhome.org

404.507.6389

HomeFirst PSH Pipeline Approved and Pending Applications – November 2020

STATUS	Approx Placed in Service Date	NAME	OWNER/APPLICANT	CONSTRUCTION TYPE	TOTAL PSH UNITS	TOTAL UNITS
Approved	PLACED IN SERVICE 8/2020	Dwell at the Alcove	Fursorage	Rehab	9	19
Approved	PHASED COMPLETION: 11/1/2020 - 10 units 12/31/2020 - 1/29/2021 - 6 units 5/31/2021 - 5/30/2021 - 8 units	Capitol View Apartments	Columbia	Preservation/Rehab	24	120
Approved	Dec 2020	Quest at Dalvigney	Quest CDO	Rehab	12	12
On Hold	Jan/Feb 2021	Adair Lofts	SL Lending, LLC.	Rehab	5	35
Approved	Oct 2021	Abbingtion at Ormewood	Rea Ventures	Rehab	8	42
Approved	Nov 2021	Covenant House	Covenant House	New Construction	30	30
Approved	Nov 2021	Stanton Park	Parallel Housing/Woda Group	New Construction	10	56
Approved	Jan 2022	Abbingtion at Ashby Station	Rea Ventures	New Construction	7	70
Approved	February 2022	Intrada Westside	Vecino Group	New Construction	25	163
Approved	March 2022	55 Milton	Prestwick	New Construction	18	156
Approved	May 2022	Thrive Sweet Auburn	Mercy Housing/PCCI	New Construction	23	117
Approved	July 2022	1265 Lakewood	Prestwick	New Construction	16	160
Approved	Sep 2022	The Mallory	Prestwick	New Construction	14	116
Approved	Sep 2022	McAuley Park	Mercy Care	New Construction	30	180
Approved	July 2022	1055 Arden	Prestwick	New Construction	11	82
Under Review	Under Review	Edgewood Court	Affordable Housing Solutions	Rehab	4	50
Under Review	Under Review	Daron Village	Atlantica Properties	Rehab	83	130
Under Review	Under Review	Heritage at West Lake	Quest CDO	Preservation/Rehab	102	102
					431	1640

Housing Surge – Unit Acquisition

PARTNERS FOR
HOME

1 BR APARTMENT VACANCIES?

FULL RENT FOR YOUR UNITS AVAILABLE NOW!

- ✓ 1 BR apartments needed
- ✓ Guaranteed 12 months rent
- ✓ Get paid NOW for upcoming vacancies



Atlanta Apartment Association, City of Atlanta, Partners for Home, and Open Doors are working together to secure hundreds of rental units in Atlanta, Clayton, DeKalb, Fulton, Cobb, and Gwinnett for people in need of affordable rental housing NOW!

**Guaranteed rent for up to 12 months
Up to two months rent to hold the unit**

**GET STARTED NOW:
LISTINGS@OPENDOORSATL.ORG
470-222-3213**



- **Goal** – Working with Open Doors to secure 600 apartments by 12/30/20 for clients on our housing queue
- **Process** – Provide up to 2 months rent to properties as incentive for properties to hold/reserve the unit for Housing Surge Rapid Rehousing
 - Units must be low barrier
 - 12 month lease in client's name
 - Must pass habitability inspection, rent reasonableness review, environmental review
 - Must be located in Atlanta metro on transit line (bus, train)
- **Kicked off efforts on 10/26**

Performance Measure	Output (10/26/2020 – 10/30/2020)
Total Units Secured (11/2-11/6) – out of 600	<ul style="list-style-type: none"> • 13 units secured via hold fee - Vesta Adams Park (all 1br) - 1991 Delowe Drive Atlanta, GA 30311 - Available Immediately • 192 units in process of being secured • 11 units at Elite Lakeview - 3781 Lakemont Drive College Park 30337 – hold fee executed, working on due diligence • 9 units at Park on Peachtree - 480 Peachtree Hills Ave NE, Atlanta, GA 30305 • 30 units at Chelsea Gdns - 2135 Godby Rd, College Park, GA 30349 • 7 units at Tucker Square Apartments - 1313 Stone Mill Way Stone Mountain GA 30083 • 6 units at Elite at City Park - 415 Fairburn Rd SW, Atlanta, GA 30331 • 21 units at Hidden Villas - 2929 Panthersville Rd, Decatur, GA 30034 • 8 units at Highland View Apartments - 784 Ponce De Leon Pl NE Atlanta GA 30306 • 10 units at Elite at 285 - 5890 Riverdale Rd, Atlanta, GA 30349 • Units at Sereste Properties – Villas at Panthersville, Hidden Valley, Park Valley, Decatur Estates
Total Lease Ups (10/26 – 10/30)	<ul style="list-style-type: none"> • 0 lease ups
Properties Visited	<ul style="list-style-type: none"> • 44 properties visited
Properties Interested	<ul style="list-style-type: none"> • 4 properties identified interest (either availability or willing to work with OD) • 103 1br units
Cold Calls	<ul style="list-style-type: none"> • 60 properties cold-called, 4 leads generated from cold calls*
Inquiries via Advertising Campaign	<ul style="list-style-type: none"> • 2 inquiries via email or phone
Marketing Efforts	<ul style="list-style-type: none"> • Developed marketing materials – 1 pager, graphics • Advertised via Atlanta Apartment Association, CoC Listserv, Facebook, Instagram • Working to advertise via DBHDD, Atlanta Housing, Invest Atlanta, City of Atlanta